

Kiwi Flooring for Kiwi Homes

NATIONWIDE
FLOORING

SALE

1st Sep - 15th Nov 2021



Our People

OUR PLACES

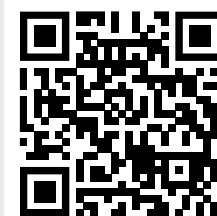
CAPE REINGA



Harish Delivering Godfrey Hirst carpets in the greater Auckland region for 14 years.

CAN YOU FIND HARISH'S TRUCKS?

Find Harish's Trucks
and you could be in to
win a \$20 gift card.



HOW TO ENTER:

1. Find the correct number of trucks (illustrations and photos) that appear throughout the catalogue.
2. Scan the QR code or go to godfreyhirst.co.nz/find&win to enter and for full terms and conditions.



INDUSTRIAL GREY



MULCH



MACE



AGED GOLD



PATINA



AVALANCHE

HEATHLAND

Feltex NZ Wool

8 Colours

\$44.50 Per SQM

\$178 Per BLM



FEATURING: HEATHLAND
IN AGED PEWTER

Furniture & Homeware - Nood
1. Replica Eames Bird
2. Retro Flip Clock
3. Hugo Desk



Thermal
Insulation



Flame
Resistant



Acoustic
Insulation



Resene
Linen

Resene
Mangrove



Waterproof[^]



Easy to
Clean



Heavy
Traffic

FEATURING: AVVIO
IN BATIK

Furniture & Homeware - Nood
1. Tropic Framed Canvas
2. Forge V2 Nest Table
3. Bronte 3 Seat Sofa



VIYELLA



CAMLET



CERVILLE



CAMILE



BATISTE



LANTANA

AVVIO

Godfrey Hirst Vinyl Plank

12 Colours

\$39 Per SQM

[^]Subject to proper installation and maintenance.

Our People

OUR PLACES

AUCKLAND



Judy-Lea

Product Innovation

Judy-Lea has been collaborating with Godfrey Hirst for over 30 years and is now a valued employee.

“

One of the aspects of Godfrey Hirst that I think is really special and that Consumers might not know about, is the sheer number of people who are involved in the manufacturing process from all around New Zealand.

Every piece of Godfrey Hirst carpet is touched by literally hundreds of Kiwis in the many, many steps along the way, before it reaches the Consumers home. When we have some of our retail partners though the Plant – they are astounded at ‘what it takes to make carpet’; yet they are only seeing one part of the picture as we have other sites that are all part of making the whole.

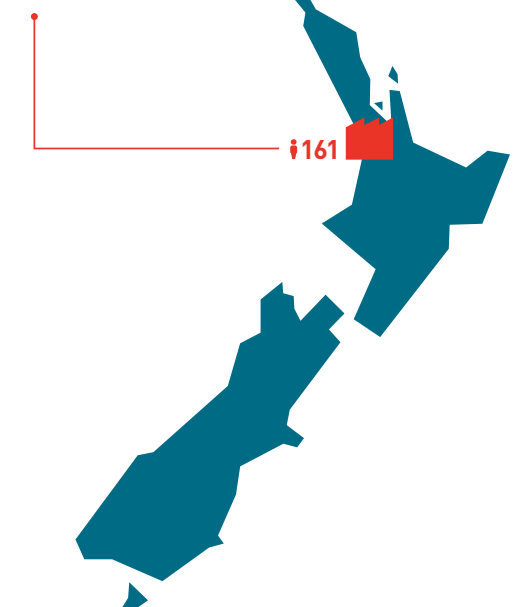
”



WIRI

Auckland

CARPET
MANUFACTURING
PLANT





RESTORE



REKINDLE



INVIGORATE



EMBERS



PHOENIX



FIRE

FAVOURITES

Godfrey Hirst Solution Dyed Nylon

10 Colours

\$38.80 Per SQM

\$142 Per BLM



FEATURING: FAVOURITES
IN RENEWAL

Furniture & Homeware - Nood
1. Sketch Monstera Framed Canvas
2. Barber Bedside Table
3. Epic Moss Knit Throw - Moss Green



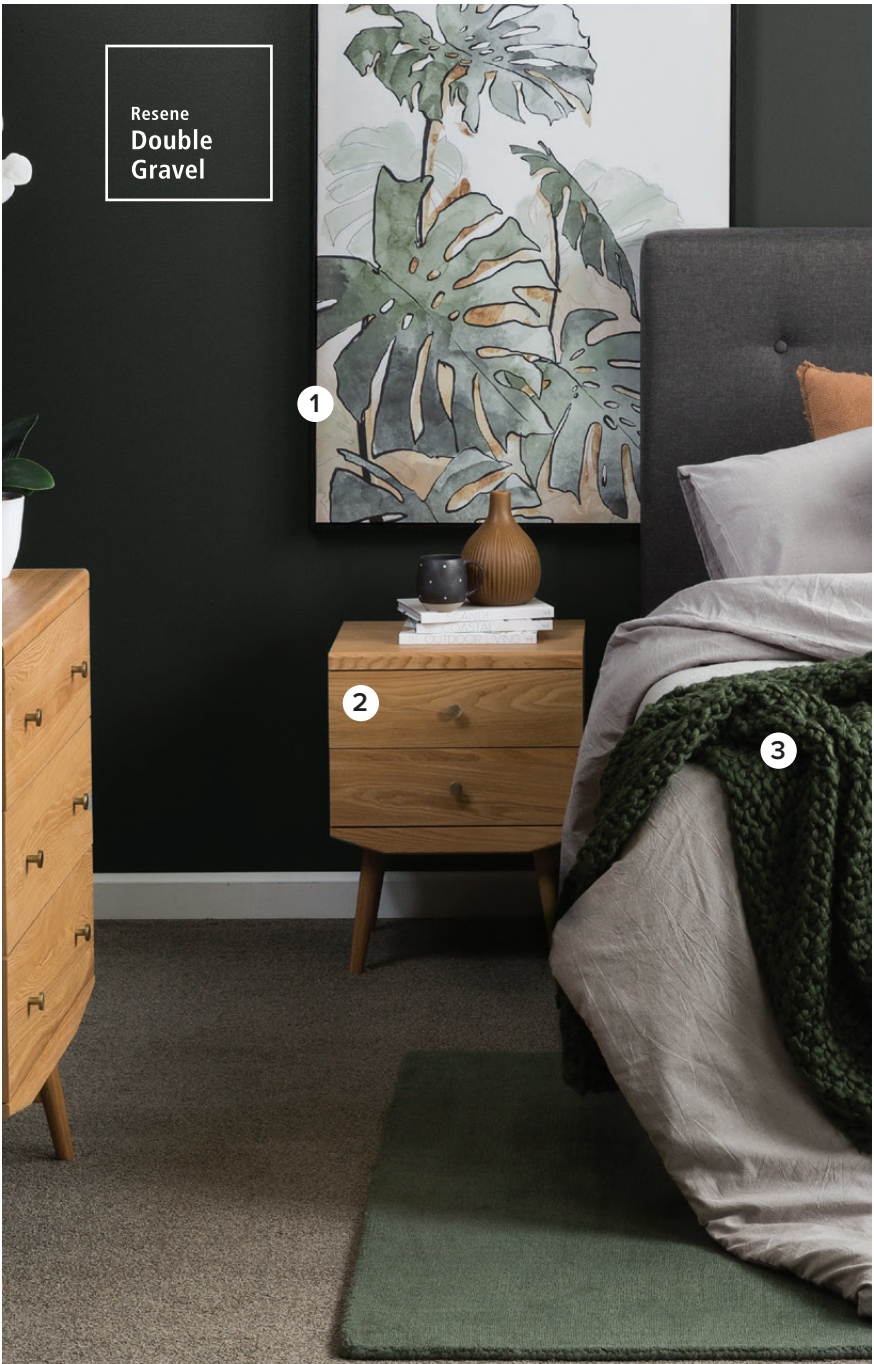
Stain
Resistant



Heavy
Traffic



Fade
Resistant



Resene
Double
Gravel

1

2

3



Resene
Half Stack &
Gunsmoke

1

2

3



Renewable



Unique Knots
& Grains



European
Oak

FEATURING: VILLA
IN SILVER FINCH

Furniture & Homeware - Nood
1. Colton 3 Seat Sofa
2. Bink Planter & Stand Set
3. Pebble Loop Pile Rug - Silver Marble



ESPRESSO



TRUFFLE



HAVANA



SUMMER BLONDE



ALPINE OAK



WHITE SANDS

VILLA

Godfrey Hirst Timber

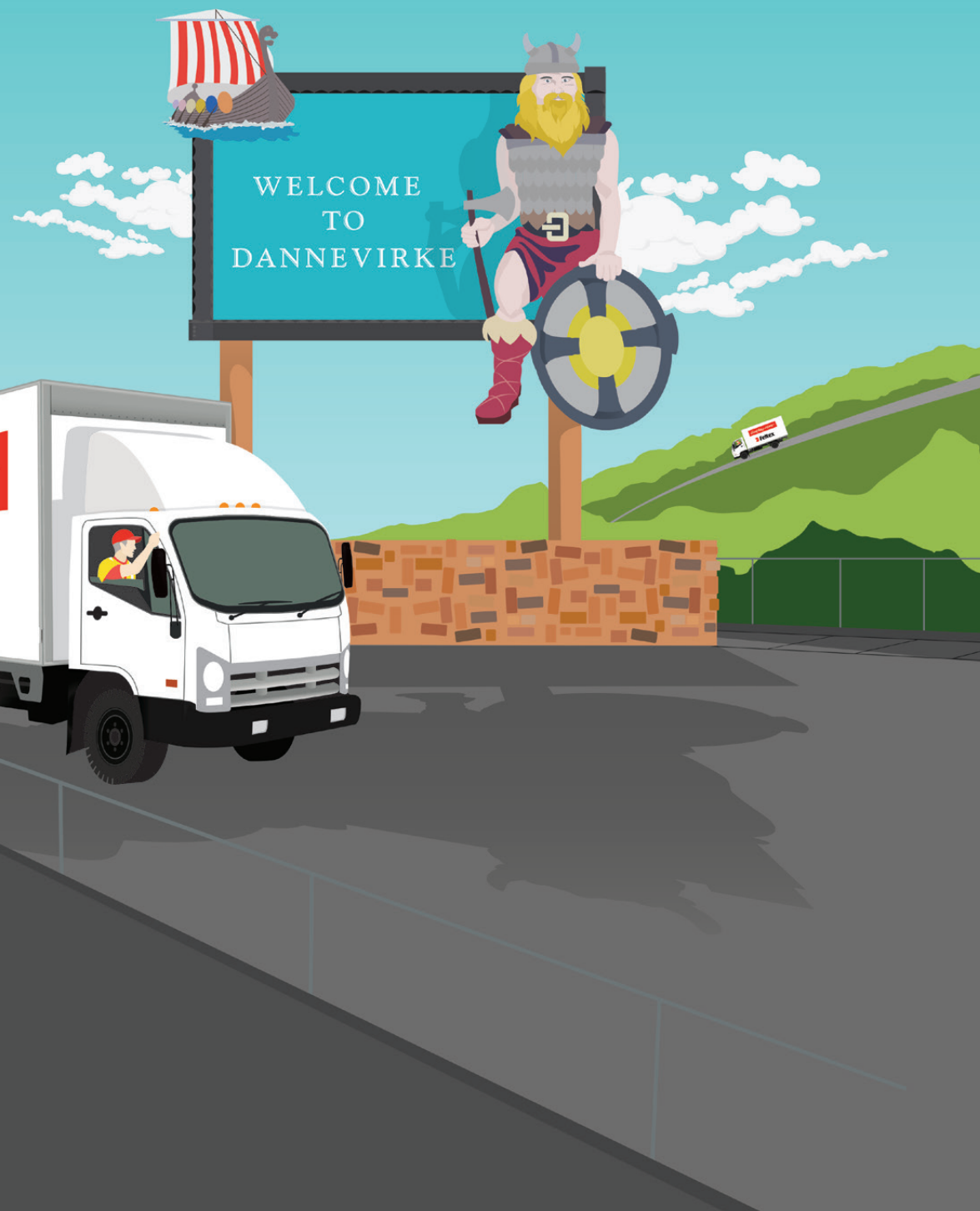
10 Colours

\$125 Per SQM

Our People

OUR PLACES

DANNEVIRKE



Whetu

Dyehouse Operator

Whetu is an operator in the Dyehouse which is at the very start of the fibre colouring process for our quality carpets.

“

As part of a team of four in the Dyehouse at Dannevirke, I am a people person, entertaining my colleagues with a few laughs and a bit of banter to make the day enjoyable.

In my training, I certainly understand that safety, quality and productivity are very important. I have attended a Wool identification course held on-site and at the scour in Napier which is a new initiative of the company.

My role consists of; feeding fibre into the cake breaker, wool dyeing, vat and crane operation, drying and pressing recording, creating bale weight tickets and forklift driving.

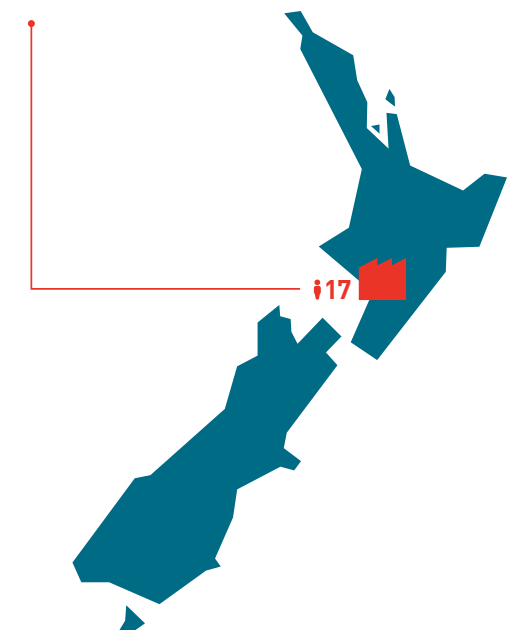
”



DANNEVIRKE

Manawatu-Wanganui

CARPET YARN
DYEING PLANT





MAYPARK



PRAVADA



DELTA



TRUFFLE



SMOKE



IVORY

ALABAMA

Godfrey Hirst Solution Dyed Nylon

12 Colours

\$54.64 Per SQM

\$200 Per BLM



FEATURING: ALABAMA
IN OIL SKIN

Furniture & Homeware - Nood
1. Orley Modular Sofa
2. Epic Moss Knit Throw - Hazelnut
3. Axis Coffee Table



Stain
Resistant



Heavy
Traffic



Pile
Recovery



Square
Edge



Embossed



Matte
Finish

FEATURING: ASTORIA
IN SUMMER GRACE

Furniture & Homeware - Nood
1. Flock Lounger
2. Perk Round Coffee Table
3. Pebble Loop Pile Rug - Cream



TRINITY



DAKOTA



JUNE MIST



RATA



SUMMER GRACE



WHITE IRIS

ASTORIA

Godfrey Hirst Laminate

10 Colours

\$49 Per SQM

Our People

OUR PLACES

WELLINGTON



Lana

Quality Supervisor

Lana is a key part of the whole manufacturing journey, overseeing the product from raw material to a finished yarn.

“

The chain of processes from ‘Farm to Floor’ to make wool carpet is a long and complex one. Within our woollen spinning plant, the key processing steps are dyeing, blending, carding, spinning and twisting. Then the yarn is ready for making into carpet!

Whether you are checking the quality of the product on the machine or testing it in the lab, I work alongside and support people from many different areas in the business while continually learning about the different processes involved in making a quality yarn.

Quality is everywhere!

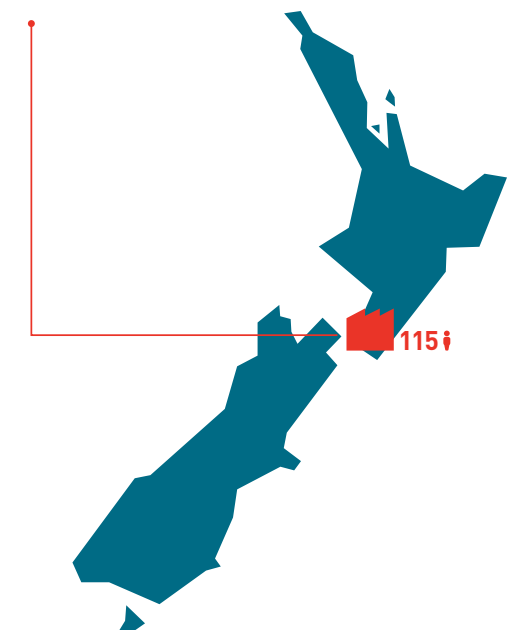
”

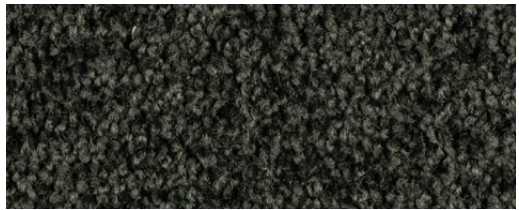


LOWER HUTT

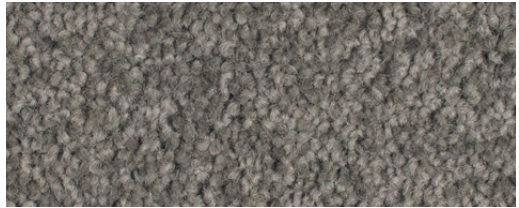
Wellington

WOOLLEN SPINNING PLANT





CINDER



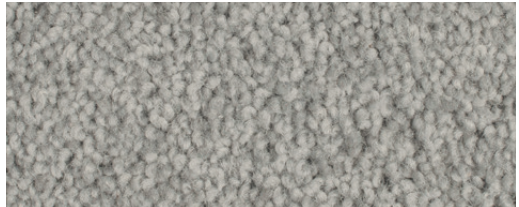
CONCRETE



WOODLAND



GREYWACKE



GLACIER BLUE



SILVER CHALICE

ENCHANT 48

Godfrey Hirst NZ Wool

11 Colours

\$59.02 Per SQM

\$216 Per BLM



FEATURING: ENCHANT 48 IN MIDNIGHT BLUE

Furniture & Homeware - Nood
1. Sabine Modular
2. Frame Tray



Humidity Control



Treated to deter insects



Naturally Hypoallergenic



Waterproof^

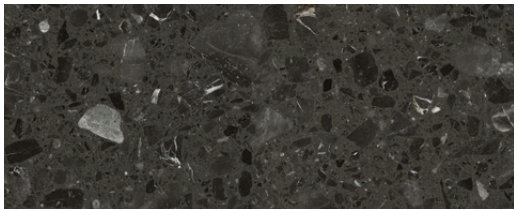


Quiet Underfoot

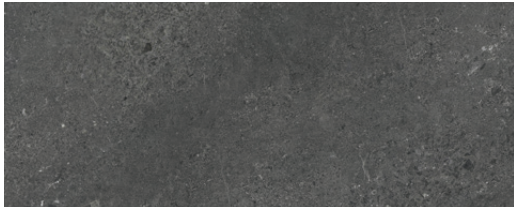


Stain Resistant

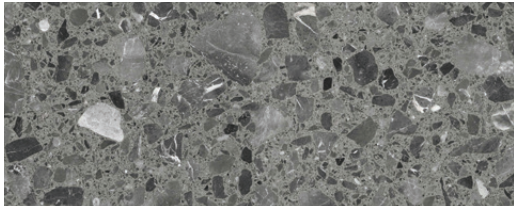
FEATURING: APOLLO STONE IN NATURAL



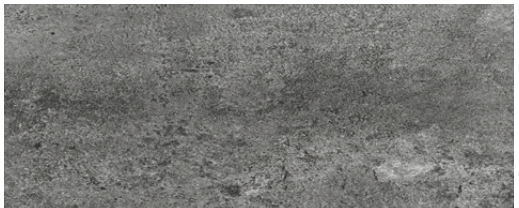
SEPIA



SLATE



CARBON



BASALT



BUFF



MARBLE

APOLLO STONE

Godfrey Hirst Hybrid

12 Colours

\$69 Per SQM

^{*}Subject to proper installation and maintenance.

Our People

OUR PLACES

OAMARU



Andrea

Senior Operator - Yarn Finishing

Andrea has over 12 years experience in yarn winding and twisting operations.



“

As a Senior Operator, part of my role is to be the Team Leader when required, which involves setting up and preparing the machines for the various types of yarn specifications, communicating with staff, and assisting them where required.

What I enjoy most about my job is the positive, friendly, supportive work environment, where you are encouraged to grow your individual skills and strengths.

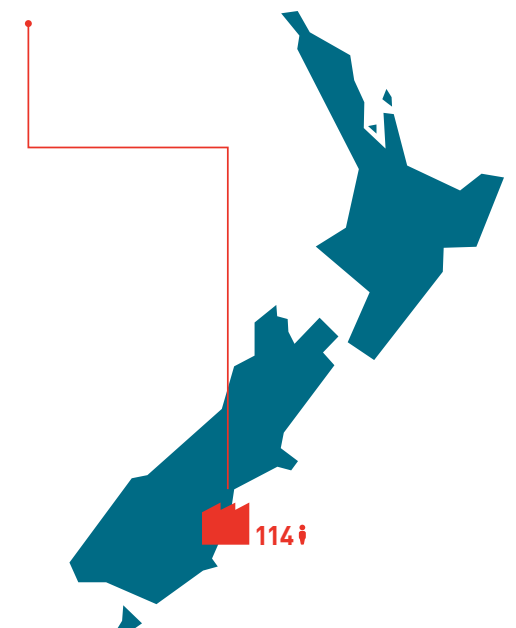
My favourite carpet is one of our Feltex products from our Salisbury range. It is 100% wool, high low loop pile which gives the carpet an amazing texture.

”

OAMARU

North Otago

**WOOLLEN SPINNING
AND DYEING PLANT**





GRANITE



GALENA



SPINEL



SULPHUR



MORTAR



TRAVERTINE

PEBBLE GRID II

Godfrey Hirst NZ Wool

8 Colours

\$43.50 Per SQM

\$174 Per BLM

FEATURING: PEBBLE GRID II
IN KIMBERLITE



Thermal
Insulation



Flame
Resistant



Hardwearing



Resene
Double
Foundry



Pressed
Bevel



Fade
Resistant



Water
Resistant^

FEATURING: AMOR CLASSIC
IN ANCIENT OAK

Furniture & Homeware - Nood
1. Tiku Rustic Mirror
2. Sara 2.5 Seat Sofa
3. Monty Shag Rug



DARK BROWN



MIDNIGHT OAK



SILVER GREY OAK



RURAL OAK



SAHARA OAK



WINTERS OAK

AMOR CLASSIC

Godfrey Hirst Laminate

12 Colours

\$69 Per SQM

^Subject to proper installation and maintenance.

Our People

OUR PLACES

TARANAKI



Tony

Sales Representative

Tony has enjoyed 16 years with Godfrey Hirst selling our wonderful carpets through the central region of New Zealand.

“

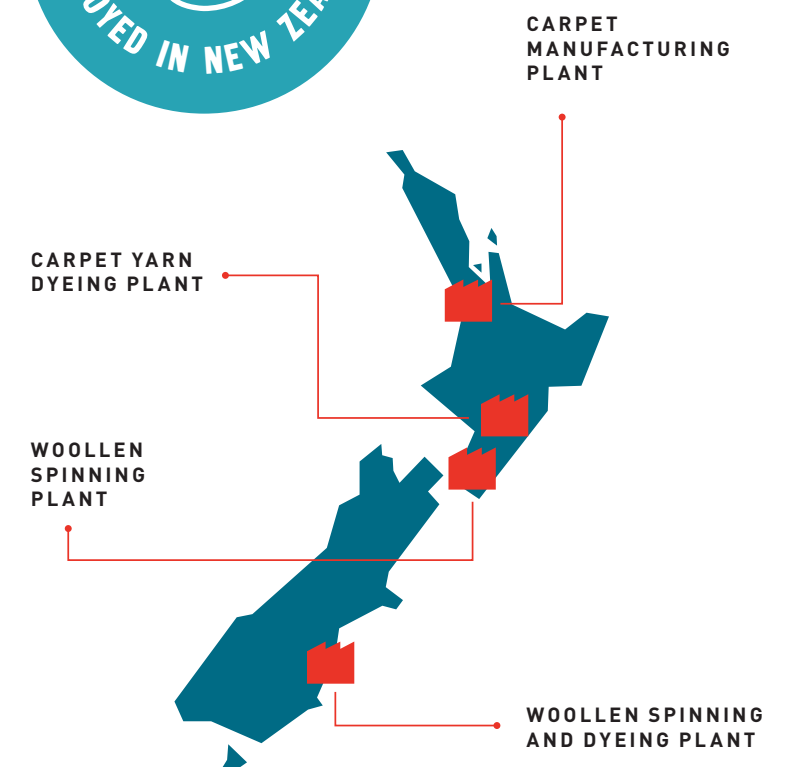
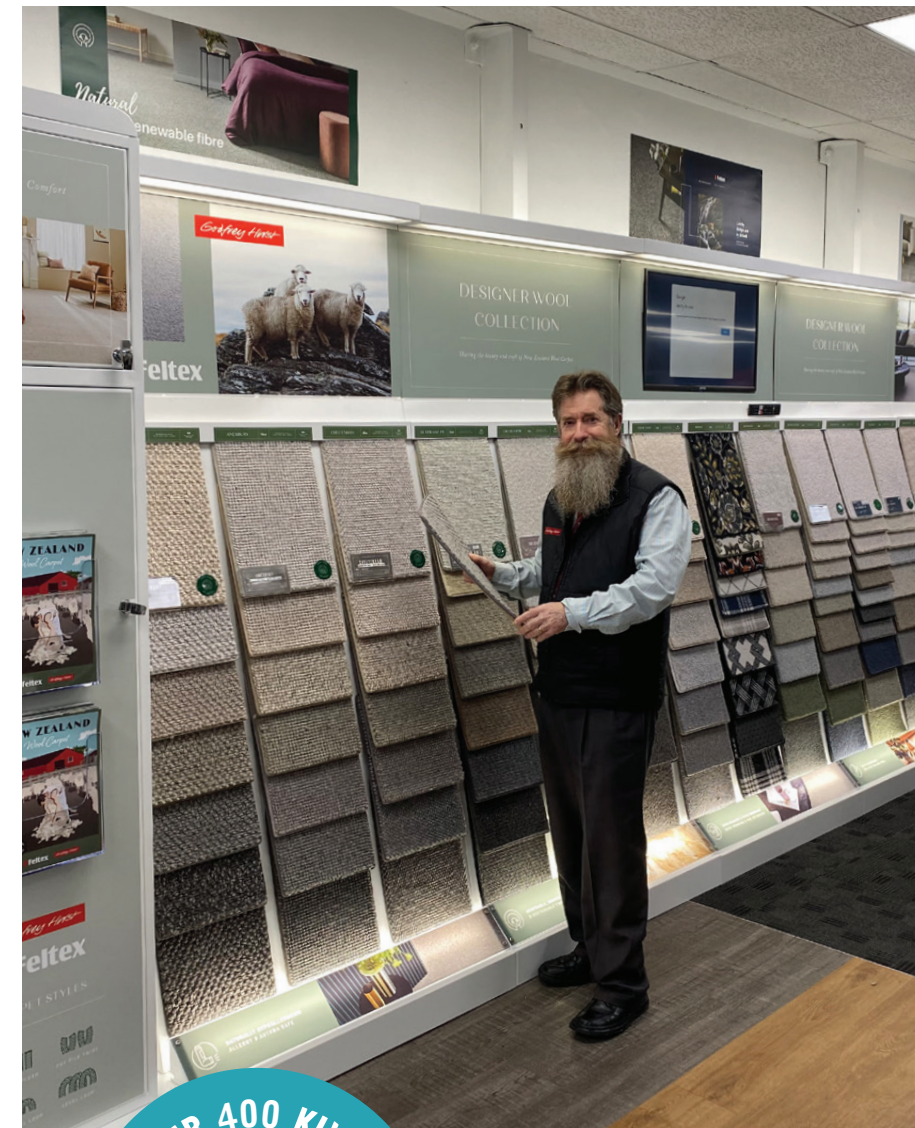
The key thing to remember when purchasing a floor covering is to think about what is trending or what colour is hot to trot, but also what is going to work for your home in a practical sense.

Your new carpet is going to last longer than any current trend!

You need to buy the carpet that is the most suitable for your environment taking into account any children, pets, internal staircases and floor to ceiling windows.

Listen to and be guided by your flooring retailer, they will consider all aspects of your lifestyle and recommend which Godfrey Hirst or Feltex carpet best suits your needs.

”





RAVEN OAK



CASTLEROCK OAK



TAYLOR OAK



DESERT OAK



NORDIC OAK



SALT LAKE OAK

BELLE XL

Godfrey Hirst Laminate

12 Colours

\$55 Per SQM

Terms & Conditions: The carpet/timber colour illustrated in the catalogue may vary from the actual product. Floor coverings are sold in different widths. Carpets promoted are sold in broadloom metres (3.66metres) and occasionally 4m. Square metre pricing is shown to help compare the costs of carpet with other flooring products. Minimum floor covering purchase is one lineal metre or single pack. Cutting and freight fees may apply. Pricing shown in the catalogue unless otherwise stated, is for the product only. Catalogue pricing expires 15 November 2021. Catalogue offers are not to be used in conjunction with any other offers. Not all products are available in all stores. Catalogue offers and pricing only available at participating stores. While most carpet ranges are made in New Zealand, some ranges are being manufactured in Australia. Hard flooring ranges are not manufactured in New Zealand. Please check our website for further information.

1

2

3

**FEATURING: BELLE XL
IN HUSK OAK**

**Wear
Resistant**

**Soft Touch
Matte Finish**

**Fade
Resistant**

Furniture & Homeware - Nood

1. Abstract Horizon Framed Canvas
2. Montemart 3 Seat Sofa
3. Monty Shag Rug

Visit our websites to find the store closest to you.

WWW.FELTEX.COM

WWW.GODFREYHIRST.COM